



SCHRAMM T130XD DRILL RIG



QUALITY • SAFETY • RESULTS

SCHRAMM T130XD DRILL RIG



CARRIER MOUNTED RIG
EQUIPPED WITH TELEMAT

TELEMAT PORTABILITY,
RANGE III TUBULAR AUTOMATION

The T130XD is the drilling contractor's rig of choice for oil & gas sector directional drilling, large diameter, deep hole water well drilling, and any application requiring a 130,000 lb hoist capacity

QR code with Major Video (needs to be public)

SPECIFICATIONS

POWER PLANT

- Detroit Diesel DDC/MTU 12V-2000TA DDEC
- 760 bhp (567 kw @ 1800 rpm)
- Air or Electric Starter system
- 2 X 110 gallon (415 l) tanks
- Direct coupled 23,000l bulk tank available

FEED SYSTEM

- 50 ft (15.24 m) head travel
- 130,000 lbf (890 kN) hoist capacity
- 100 fpm (30.5 m/min) hoist speed
- 32,000 lbf (142 kN) pulldown
- 200 fpm (61 m/min) pulldown speed

COOLING / HEATING

- Three core, side by side type
- Operating ambient temp Range -45 °C to 54 °C
- Available 1,000,000 BTU indirect heating system

DIMENSIONS

- OA length, transport - 42' 9" (13 m)
- OA width - 8' 6" (2.6 m)
- OA height, transport - 13' 6" (4.1 m)
- Weight std. rig - 92,000 lb (41,723 kg)

WINCH

- Planetary with spring applied hydraulic brake
- 9,600 lb (4,354 kg) bare drum line pull
- 151 fpm (46 mpm) bare drum line speed

MAST / DERICK

- 2850mm Under table clearance for BOP
- Free-standing dump mast
- hydraulically retracted slip box
- 20" (508 mm) table opening w/o slips
- Telescoping construction permits long head travel and working height, yet short OA length in transport

OUTRIGGERS

- Front - (1) 5" bore x 41" stroke
 - (127 mm x 1.4 m)
- Rear - (2) 5" bore x 41" stroke (127 mm x 1.4 m)

TILTING TOP HEAD DRIVE

- Infinitely variable Rotation Speed 0 – 143 RPM
- 106,600 in-lb (12,045 N.m) torque
- 3" diameter (76.2 mm) spindle thru hole
- Dual Rotational break for directional drilling

QUALITY • SAFETY • RESULTS

CARRIER

- CCC 8x4 Carrier
- Cat C-13, 410 hp @ 2100 rpm engine
- 44,000 lb (19,955 kg) front axles
- 21,500 lb (9,750 kg) pusher axle
- 52,000 lb (23,587 kg) rear axles
- 117,500 lb (53,298 kg) GVWR

DRILL PIPE & CASING

- Table Opening: 30 inches (762 mm) diameter with table retracted
- Hydraulically retractable slip box
- Iron Rough Neck

DRILL PIPE AND CASING

- 30' x 4-1/2" OD x 2-7/8 IF breakout style drill pipe,
- range III casing

28" (711 mm) max. diameter through slipbox

OPTIONAL EQUIPMENT

- NOV Rig Sense Monitoring
- NOV Gas Watch iii
- Major Drilling Rock V analytics

RIG WEIGHT AND DIMENSIONS

- OA length, transport: 53 ft (16.2 m)
- OA width: 9 ft 6 inches (2.9 m)
- OA height, transport: 13 ft 6 inches (4.12 m)
- Rig trailer weight: 95,000 lbs (43,091 kg)
- Pipe handling trailer weight: 40,000 lbs (18,144 kg)

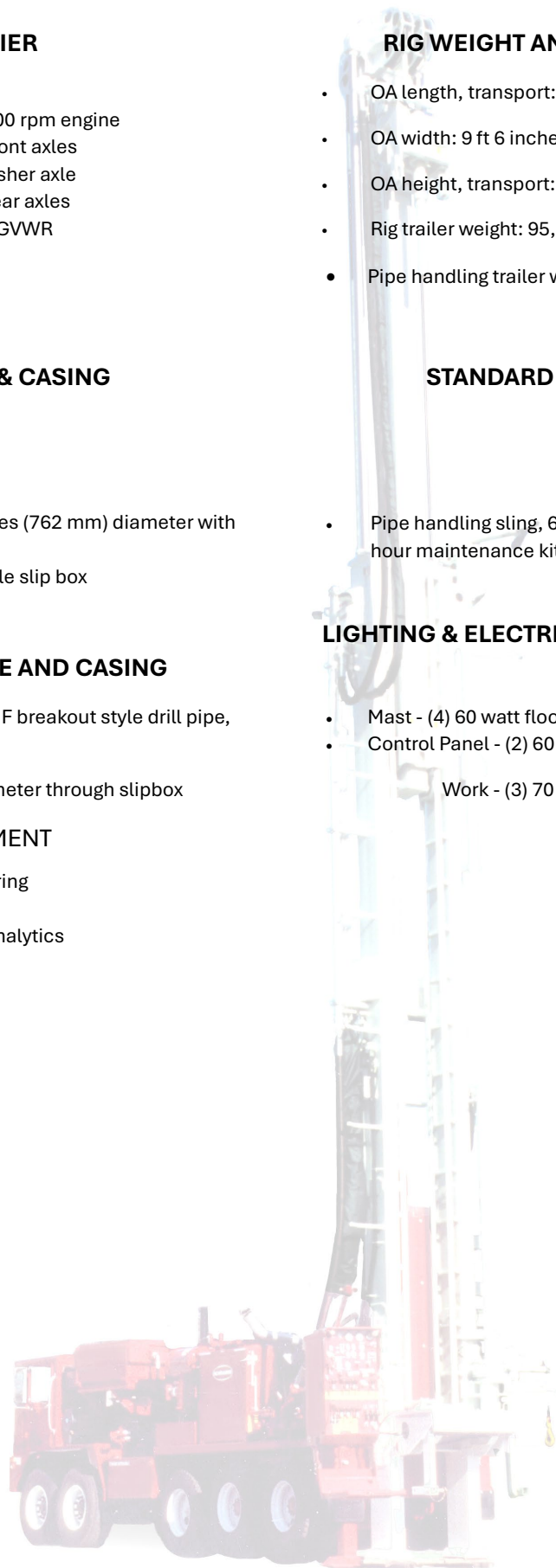
STANDARD ACCESSORIES

- Pipe handling sling, 60" breakout wrench, and 50 hour maintenance kit.

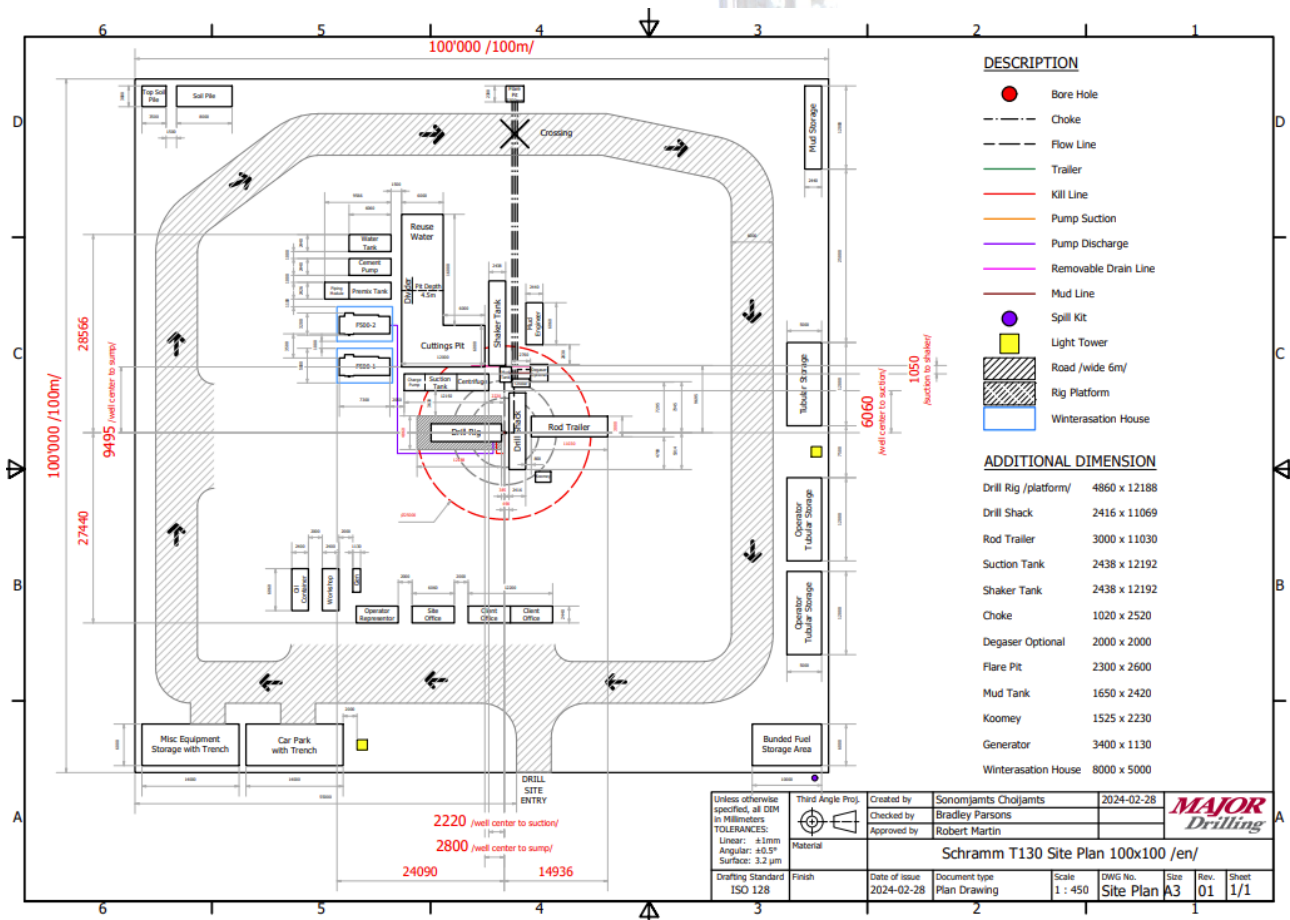
LIGHTING & ELECTRICAL SYSTEM- 24 Volt

- Mast - (4) 60 watt floodlights
- Control Panel - (2) 60 watt gauge floodlights

Work - (3) 70 watt halogen

**QUALITY • SAFETY • RESULTS**

STANDARD T130XD RIG LAYOUT



QUALITY • SAFETY • RESULTS